

<p>Scan me WeChat/WhatsApp</p> 	<p><b>GUANGZHOU IDEALPLUSING INFORMATION TECHNOLOGY CO.,LTD</b></p> <p><b>Tel:</b> +86-20-89282095 ; <b>Mobile/Whatsapp:</b> +86-15989132799</p> <p><b>SKYPE:</b> +86-15989132799 <b>QQ :</b> 2274914457 <b>Wechat ID:</b> idealplus_power</p> <p><b>E-MAIL:</b> <a href="mailto:info@idealplusing.com">info@idealplusing.com</a> <b>Website:</b> <a href="http://www.idealplusing.com">www.idealplusing.com</a> <a href="http://www.idealpowersupply.com">www.idealpowersupply.com</a></p> <p><b>Factory #1 ADD:</b> 7/F, Block A, Cabo Tec. park, North of HuaFa Road, Gongming, Guangming new Dis. ,SZ,China.</p> <p><b>Factory #2 ADD:</b> 3/F, Building C, HengTongFa Industrial Area, TangTou Industrial Park , ShiYan , Baoan , SZ, China.</p>
--	---

**IPS-DTDYI9-36S2410**  
**9-36VDC to 24VDC 10A Isolate DC DC Converter-IDEALPLUSING**

**PART 1. INTRODUCTION**

DC/DC converter is a voltage converter which can effectively output fixed voltage after converting input voltage. DC/DC converters are divided into three categories: Boost type, boost & buck type, and buck type.

Three kinds of control can be adopted according to the demand. PWM control type has high efficiency and good output voltage ripple and noise. PFM control type has the advantage of low power consumption even if it is used for a long time, especially under small load.

PFM control is implemented when PWM/PFM converts to small load, and it is automatically converted to PWM control when heavy load occurs. At present, DC-DC converters are widely used in mobile phones, MP3, digital cameras, portable media players and other products. It belongs to chopper circuit in the classification of circuit types.

**PART2. FEATURES**

1	Design meeting RoHS / CE
2	High efficiency: 93%
3	Isolated between input and output
4	Internal capacitor: NCC & NICHICON (high reliability)
5	100% full load burn-in test
6	Over load, Over temperature and Over voltage protections
7	Waterproof level IP65
8	12 months warranty

**PART 3. MODEL DEFINITION**

IPS-DTDYIXXSYYZZZ , For example : IPS-DTD12S2460

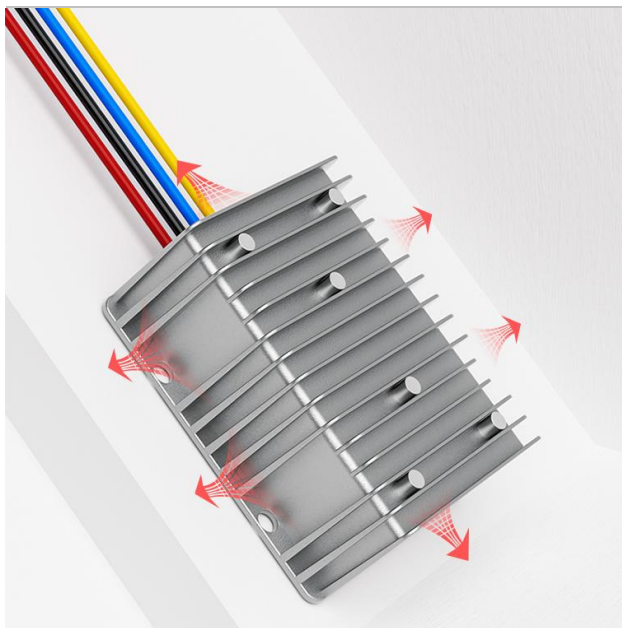
IPS	IDEALPLUSING Brand	DTD	DC TO DC
XXX	Max input Voltage	YYY	Max output Voltage
ZZZ	Max output Current		

**PART 4: TECHNICAL PARAMETER**

Brand	IDEALPLUSING
Type	Isolated
Model	IPS-DTDYI9-36S2410
<b>DC voltage INPUT</b>	
Voltage range	9-36VDC
<b>DC voltage &amp; Current output</b>	
Voltage rate	24VDC

Current	10AMPS
Rate Power	240Watts
Size	100*80*39(MM)
NW	500G
<b>Others</b>	
Customize	Allow
Material of shell	Aluminum
Working temp	-20~80°C
Efficiency	93%
Waterproof Level	IP65



## PART 5: REFERENCE PICTURES

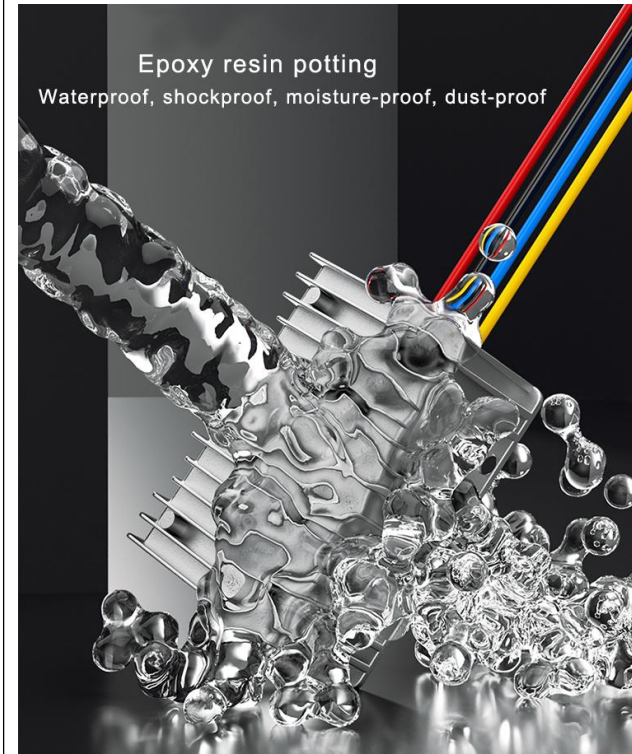


Operates even in harsh ambient temperatures

Adaptation to ambient temperature

Highly adaptable to ambient temperatures

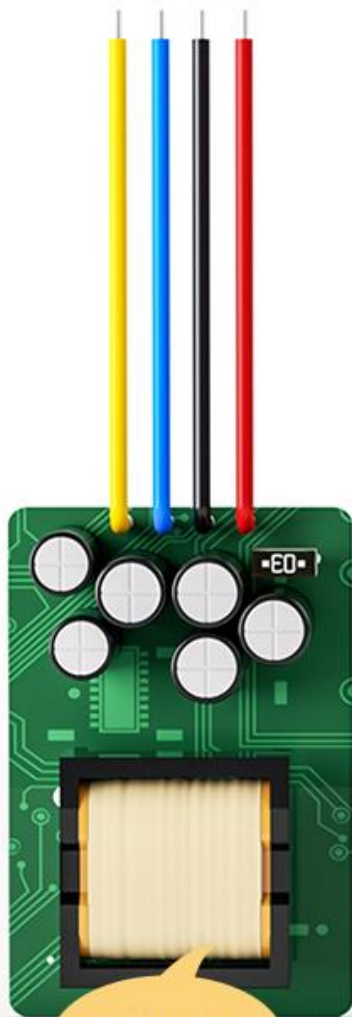





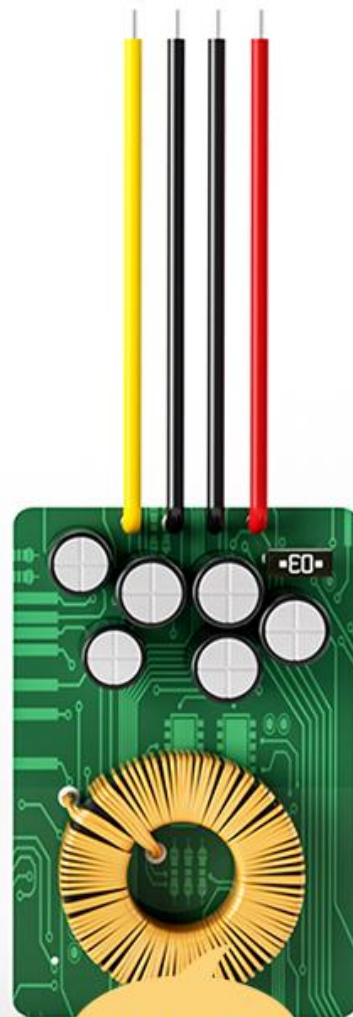
Original circuit design  
Provide customized services



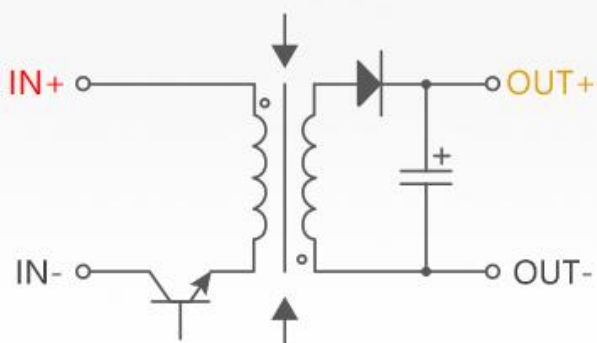
# ISOLATE VS Non-Isolate



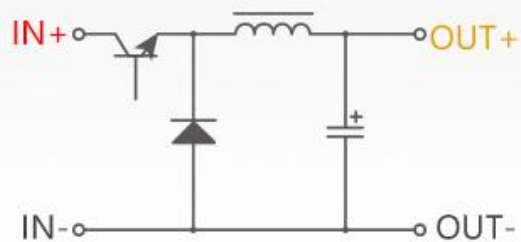
Transformer



Inductor



Isolate Circuit diagram



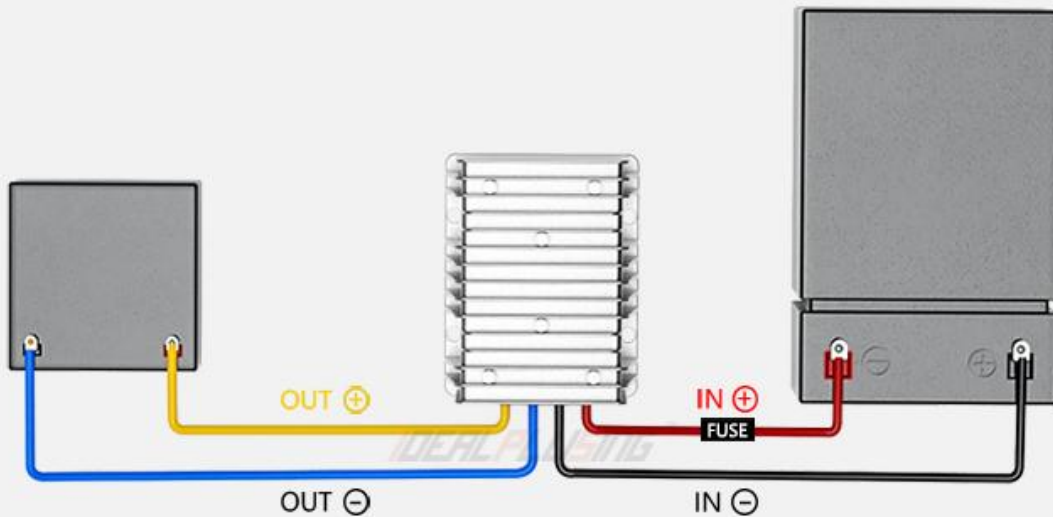
NON-Isolate Circuit diagram

## Wiring Diagram

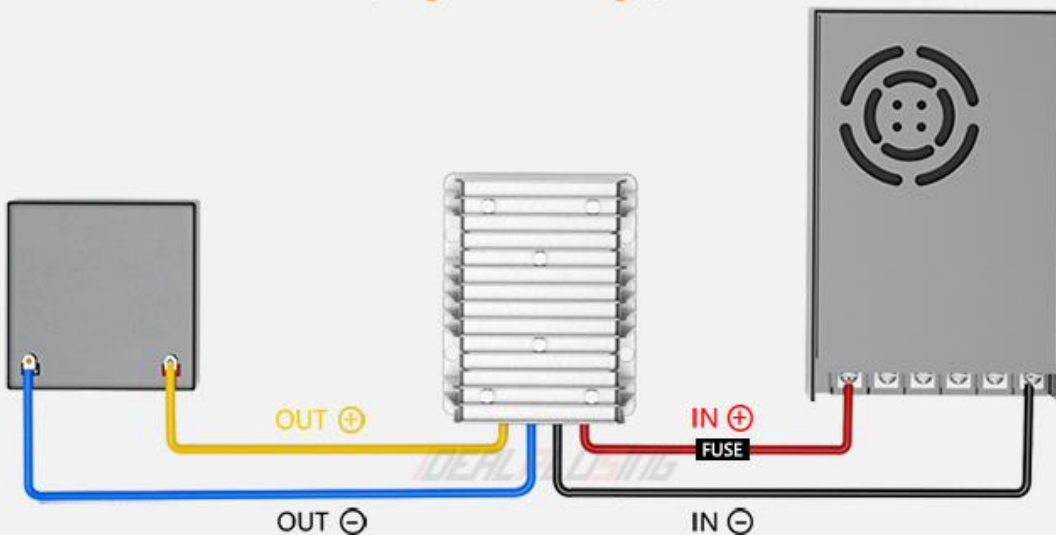
Gentle reminder:

(The positive and negative terminals of the converter's inputs are strictly reversed, otherwise it will cause permanent damage.)

### Standard Converter Wiring Diagram (Positive Voltage)



### Telecom Converter Wiring Diagram (Negative Voltage)



RED : IN⊕( INPUT )

Yellow: OUT⊕( OUTPUT )

BLACK: IN⊖( INPUT )

BLUE : OUT⊖( OUTPUT )

